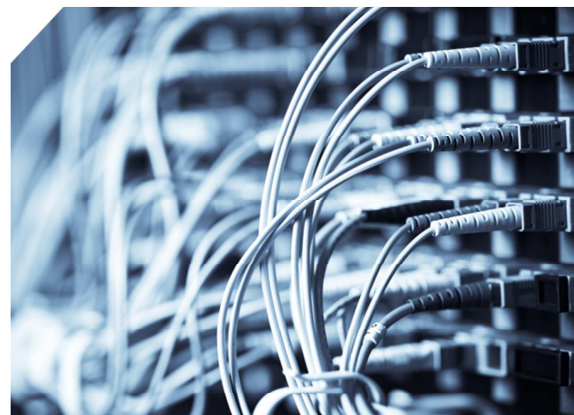


T3 Circuits (DS3 Circuits)

T3 Circuits are dedicated internet connections delivering the highest level of reliability and 45 Mbps of fast, high performance bandwidth perfect for mission critical applications.



FEATURES



Quick Installation

From order to installation, T3 Circuits can normally be up and running in 7 to 30 days.



45 Mbps bandwidth

T3 circuits deliver 45 Mbps of guaranteed bandwidth perfect for businesses who depend on the Internet for daily operations



Connect privately

T3 circuits are private connections delivered directly to your office and not shared.



Performance guaranteed

TrueNet guarantees latency under 50 Ms and under 1% packet loss.



Uptime guaranteed

TrueNet guarantees our T1 internet connections for 99.9% Uptime



LIVE support

Support calls are answered live, by local support staff

BENEFITS

➤ High Bandwidth

T3 internet connections provide 45 Mbps of dedicated, private internet access designed specifically for business use. Burstable options are available.

➤ Available Anywhere

TrueNet's broadband network is not limited to one geographic region, which means we deliver a T3 circuit anywhere in the continental United States.

➤ Cisco® Equipment

Premium equipment makes a difference. TrueNet installs Cisco®, the #1 trusted hardware brand in the world, at each customer location for maximum performance.

➤ Short Contracts

Technology and business needs change frequently, which is why we only require 12 month contracts instead of lengthy, multi-year terms for T3 services.

GUARANTEES

➤ Availability Guarantee: 99.9% Uptime

TrueNet's target for Network Availability is 99.9% for any given month. Network Availability will be determined as an average of actual circuit availability as a percent of total potential circuit availability measured on a monthly basis.

➤ Latency Guarantee: Less Than 50 Milliseconds

TrueNet guarantees an average monthly transmission rate of 50 milliseconds (32-byte packet) or less to at least one of TrueNet's upstream Internet providers' or peers' BGP interfaces. TrueNet measures Internet latency to TrueNet upstream Internet providers' or peers' BGP interfaces at approximately five (5) minute intervals and calculates the average at the end of each calendar month.

➤ Performance Guarantee: Less than 1% Packet Loss

TrueNet guarantees that packet loss shall be not more than one percent (1%) during any calendar month. TrueNet measures packet loss from the customer premise equipment (CPE) to any TrueNet Edge Router.